



Solenoid Pump PX Series - Heavy duty

PX50

FEATURES:

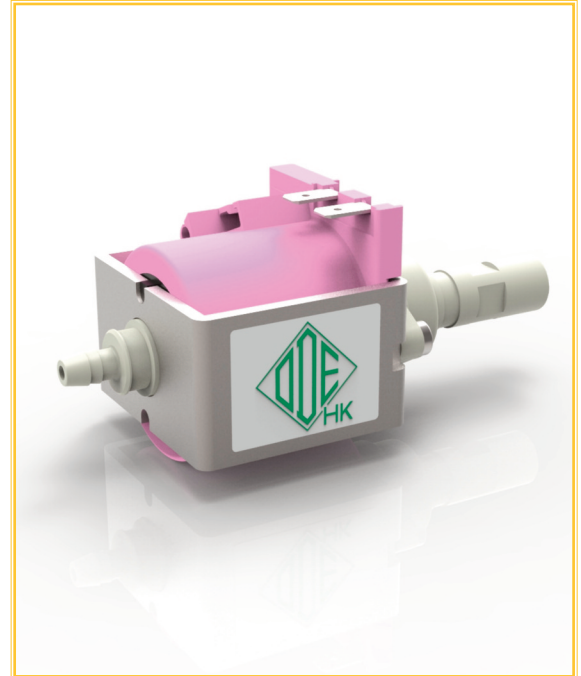
Outlet connection	G 1/8
Pressure max	15 bar
Fluid	Water
Max Ambient Temperature	35°C
Fluid Temperature	+ 4°C - 35°C
Terminals	6.3mm x 0.8mm Faston type

External diode not required

Proven sealing system to ensure a long life to the Pump:
90.000 cycles with 1 min.ON / 1 min. OFF without back pressure.

MATERIALS:

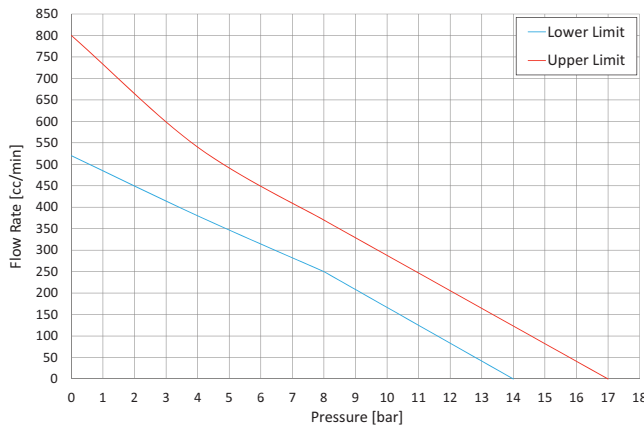
Body	PA66
Plunger	Stainless Steel series 400
Springs	Stainless Steel series 300
Check valve	NBR
Seals	EPDM/Silicone



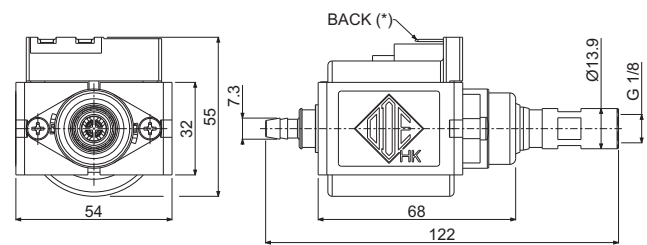
Code	Voltage Frequency [V - Hz]	Duty cycle ON/OFF [min.]	Class	Power	Approvals
PX50100V-A1P-N08R	100 ~ 50/60	1/1	F (155°C)	53 W	JET NSF LFGB
PX50120V-A1M-N08R	120 ~ 60	1/1	F (155°C)	0,78 A	UL NSF LFGB
PX50230V-A2P-N08R	230 ~ 50	1,5/1	H (180°C)	53 W	CE VDE NSF LFGB

PERFORMANCE CURVE:

Performances measured with cold coil, using water as fluid.



DIMENSIONS:



(*) Also available with faston orientation UP and FORWARD

Note

The performance curve is referred to the 230V 50 Hz version, for different voltages the limits can be slightly different. Please contact our Sales Office for any further clarifications that may be required | A continuous operation can damage the unit permanently | A long storage of the pump, particularly in hot environments, can cause problems during the first operations of the component.

ODE S.r.l. is the official distributor of the products marked *ODE_{HK}.
ODE_{HK} reserves the right to carry out technical and aesthetical modifications without prior notice.
For any request for Product certificate, please contact ODE S.r.l. Sales Office.